

# Winners' Report

# The Construction Supplier Innovation Awards UK 2025

It has been a privilege to shine a spotlight on the incredible innovations shaping the UK's construction landscape. The Construction Supplier Innovation Awards UK 2025 celebrate the people, solutions, and partnerships powering real progress – from digital transformation and BIM advancements to smarter project management, sustainability breakthroughs, and automation at scale.

We were overwhelmed by the standard of entries and inspired by the stories shared. These winners reflect what's possible when deep expertise meets bold ambition not just in the largest firms but also from agile disruptors and niche specialists rising to the moment.

While this is the inaugural year of these awards, they already feel like an essential extension of Construction & Civil Engineering Magazine's mission: to inform, champion, and connect the sector. Our editorial team, in close collaboration with our independent Advisory Board, approached this programme with care and intention—seeking not just innovation in name, but innovation with real impact. I would like to personally thank our Advisory Board for their time, insight, and invaluable contributions.

Whether you're a winner, nominee, or simply reading this report for inspiration – I encourage you to explore these stories and celebrate what they represent: excellence, resilience, and a shared commitment to the future of construction in the UK.



Mary Floate

**Mary Floate**  
Editor  
Construction & Civil Engineering Magazine

## Advisory Board

**Cristina Sánchez Jiménez**  
BIM Manager & Digital Engineer,  
Architect, Data Analyst  
**Lendlease**

**Dr Zainab Dangana**  
Head of Sustainable Technology  
**Wates Group**

**Floriano Ferreira**  
Associate VP, Director of Digital  
**HDR**

**Matteo Orsi**  
Associate Director, Head of Digital  
**Morris+Company**

**Stephen Pearman**  
IT Director Digital  
Transformation Director  
**Morgan Sindall Construction**

**Alexandra Vasilescu**  
Digital Engineering  
and BIM Manager  
**Mace**

**Lilian Ho**  
Senior BIM Manager / Digital Lead  
**AECOM Engineering UK&I**

**Vladimir Jankovski**  
Director, Construction Engineering  
**Robert Bird Group**

**Shadan Dwairi**  
Senior BIM & Digital  
Engineering Consultant  
**Costain Group PLC**

**Nicolas Deloeil**  
Chief Data Officer  
**Bouygues UK**



## Advisory Board

Thank you for your time and valuable input



**Cristina Sánchez Jiménez**  
*BIM Manager & Digital Engineer,  
Architect, Data Analyst*  
**Lendlease**



**Dr Zainab Dangana**  
*Head of Sustainable Technology*  
**Wates Group**



**Floriano Ferreira**  
*Associate VP, Director of Digital  
HDR*



**Matteo Orsi**  
*Associate Director, Head of Digital*  
**Morris+Company**



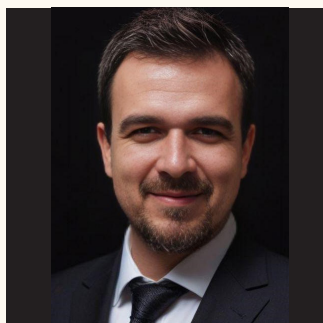
**Stephen Pearman**  
*IT Director Digital  
Transformation Director*  
**Morgan Sindall Construction**



**Alexandra Vasilescu**  
*Digital Engineering  
and BIM Manager*  
**Mace**



**Lilian Ho**  
*Senior BIM Manager/Digital Lead*  
**AECOM Engineering UK&I**



**Vladimir Jankovski**  
*Director,  
Construction Engineering*  
**Robert Bird Group**



**Shadan Dwairi**  
*Senior BIM & Digital  
Engineering Consultant*  
**Costain Group PLC**



**Nicolas Deloeil**  
*Chief Data Officer*  
**Bouygues UK**



# Generation i turns real-time insight into real-world growth



**AVEVA**

Industrial Intelligence



## Most Innovative Asset Lifecycle Management Solution



Caspar Herzberg, CEO

## AVEVA

AVEVA is a global leader in industrial software, sparking ingenuity to drive responsible use of the world's resources. The company's secure industrial cloud platform and applications enable businesses to harness the power of their information and improve collaboration with customers, suppliers, and partners. Over 90% of leading industrial enterprises rely on AVEVA to help them deliver life's essentials: safe, reliable energy, food, medicines, infrastructure and more. By connecting people with trusted information and AI-enriched insights, AVEVA helps them engineer capital projects more efficiently, operate better and create sustainable value, from the plant to the cloud and beyond.

Named as one of the world's most innovative companies, AVEVA's open solutions draw on the expertise of more than 6,000 employees, 5,000 partners and 5,700 certified developers. AVEVA helps accelerate smart manufacturing and a connected ecosystem, bringing data from plant systems, processes and assets together in the cloud to create an operational and scalable digital twin. AVEVA Asset Strategy Optimization provides a comprehensive understanding of critical assets, failure behaviours and mitigating actions. This, along with the ability to simulate maintenance strategies, empowers industrial organisations to develop a risk-based asset strategy to achieve optimal performance, productivity, and sustainability.

## AVEVA

<https://www.aveva.com/>





# You can cross **fast site connectivity** off your list.

We connect more than 3,000 sites a year for some of the biggest names in British construction, including Cala, Kier, Taylor Wimpey and Crest Nicholson.

**5G fixed wireless access**

**Private cellular networks**

**24/7 technical support**

We guarantee to connect your construction site to super-fast broadband in days, not months



"They care, they are proactive and they really listen."

Beard Construction

"Exceptional support, impressive assistance and perfect alignment."

Taylor Wimpey

"UK Connect will save us hundreds of thousands of pounds."

Crest Nicholson

**Put us to the test:**

**ukconnect.com**  
**info@ukconnect.com**  
**0333 900 9860**



## Most Innovative Connectivity Solution

UK'S No.1  
Advanced  
wireless  
connectivity  
provider



Jenny Walker, Chief Marketing Officer

## UK Connect

Connect is at the forefront of revolutionising site connectivity across the UK. We specialise in rapid-deployment, enterprise-grade internet and communication solutions for construction, infrastructure, and remote operations. Whether powering up a project on day one or scaling complex digital infrastructure across multiple phases, we ensure seamless communication, robust data access, and total site control from the outset.

Founded on a mission to eliminate digital delays and unlock productivity on site, UK Connect offers a comprehensive range of services—from superfast Wi-Fi and private 5G networks to IoT sensors and smart site technology. Our solutions are engineered to reduce downtime, enhance safety, and drive real-time decision-making through secure, reliable infrastructure.

We understand that every site is different. That's why our team of national engineers work closely with contractors and developers to design and deploy connectivity that fits each unique environment, whether that's a city centre high-rise or a remote infrastructure project. With customer support baked into everything we do, we help teams collaborate more efficiently, access information faster, and build smarter.

Trusted by leading names in construction, UK Connect is more than a tech provider, we're a trusted partner delivering connection without compromise - guaranteed.



[www.ukconnect.com](http://www.ukconnect.com)





# Award Winning FARO® 3D Solution

The Future of Site Capture,  
Awarded Today!



Our award-winning laser scanning solutions empower construction professionals to make faster, data-backed decisions with complete site clarity.

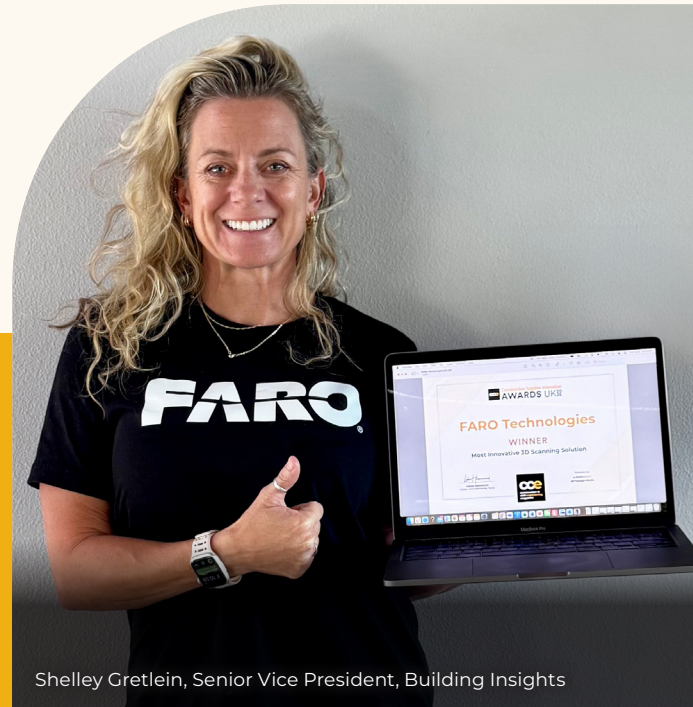
- **Rapid and accurate site data** that you can trust with 3D Solutions like the FARO Focus Laser Scanner
- **Cloud-based processing** in FARO Sphere® XG Digital Reality Platform for faster decisions and better coordination
- **Real-time feedback** in the FARO Stream™ App to validate scans instantly on-site

# FARO®

Visit **FARO.com** to see all our 3D scanning solutions and how they can improve your construction workflows.



## Most Innovative 3D Scanning Solution



Shelley Gretlein, Senior Vice President, Building Insights

## FARO Technologies

For over 40 years, FARO Technologies has been at the forefront of providing innovative technology solutions that empower customers to accurately measure their surroundings and leverage data to make smarter, quicker decisions. It is dedicated to bridging the gap between the digital and physical realms, delivering data-driven reliability, precision, and immediacy.

Both FARO and its customers are motivated by the same passions. They seek a deeper understanding of the world around them and are eager to bring fresh ideas to life. They recognize the importance of data-driven accuracy and its transformative power.

As a global leader in 3D measurement, FARO enables architects to imagine a brighter future, builders to undertake remarkable projects, and engineers to design with both precision and confidence. They provide industry professionals with the tools they need to reach a 'That's It!' moment faster. They are attuned to the way the industry operates, and above all, their customers can always count on them to deliver.

For more information, visit [www.faro.com](http://www.faro.com)



[www.faro.com](http://www.faro.com)





## Most Innovative Robotics Solution

### Kewazo

KEWAZO is a leader in energy robotics, with active operations across Europe, the UK, and North America. KEWAZO automates material movement for construction sites and industrial plants.

KEWAZO's lifting robot, LIFTBOT, improves safety and efficiency by replacing cranes and manual handling during capital, turnaround, and maintenance projects. LIFTBOT has been deployed at iconic construction sites, including the U.S. Capitol, and the largest refineries, including the ExxonMobil Baytown Refinery.

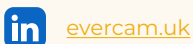


**KEWAZO**

## Most Innovative Drone Technology Solution

### Evercam

Evercam delivers construction visibility solutions through advanced reality capture technology and AI capabilities. Our platform integrates data from drone technology, fixed cameras and 360-degree imaging to provide real-time site monitoring and comprehensive project documentation. With 4D BIM integration, intelligent time-lapse capabilities and automated progress tracking, Evercam transforms how teams view and manage projects. Serving global markets, our technology enables safer, more productive construction through visual intelligence and automated analysis.



 **EVERCAM**

## Most Innovative IoT Solution

### OpenSpace

OpenSpace is a computer vision and AI company that helps construction companies and operators reduce risk and increase efficiency. Its image-first platform streamlines coordination between field and office teams, with powerful tools that bring new visibility and insights from pre-construction through operations. Customers such as McLaren, Mace, and TClarke rely on OpenSpace to document sites more effectively, avoid destructive investigations, and finish projects ahead of schedule.



 **OPENSOURCE**

## Construction Industry Leader Award

### Claire Curran, MD of Linaker

Having started her career at GSH in 1999, Claire progressed to Sales Director at ISS and Business Unit Director at Kier before being appointed Managing Director of Linaker in 2018. Now, seven years on, Linaker has grown organically from £3m to £60m, solidifying Linaker's position as the fastest growing company in the sector for three years running, alongside having held the prestigious title of 23/24 BESA President, the leading trade association for building engineering services.



[www.linaker.com](https://www.linaker.com)



Claire Curran,  
Managing Director



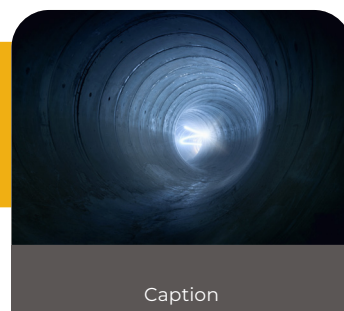
## Infrastructure Project of the Year

### Thames Tideway Tunnel

Tideway is the company behind London's new 'super sewer' – a vital piece of infrastructure that is tackling sewage pollution and protecting the River Thames. Running 25km beneath London, the project intercepts sewage before it enters the river, and diverts it away for treatment. More than 25,000 people have worked on this once-in-a-century project, while the infrastructure has already prevented around 7.5 million tonnes of sewage from spilling into the Thames since being connected earlier this year.



<https://www.tideway.london/>



Caption



**Tideway**





Construction Supplier Innovation  
**AWARDS UK<sup>2025</sup>**

**MORE  
WINNERS**

Most Innovative BIM Design and  
Collaboration Solution

**ArCADiasoft**

---

Most Innovative BIM Data Management  
and Integration Solution

**Asite Solutions Ltd.**

---

Most Innovative BIM Implementation  
in Construction

**Collins Construction**

---

Most Innovative Digital Twin Solution

**Invicara Twin**

---

Most Innovative Solution for  
Digital Process Automation

**Kianda**

---

Most Innovative AI Solution for  
Construction Optimisation

**ALICE Technologies**

---

Most Innovative Big Data and Analytics Solution

**nCircle Tech Ltd**

---

Most Innovative Digital Transformation Solution

**InEight**

---

Most Innovative Cybersecurity Solution

**Darktrace**

---

Most Innovative Smart City Solution

**Hexagon**

---



Most Innovative AI Solution for Health & Safety  
**FieldAI**

---

Most Innovative Modular Building Solution  
**Innovare**

---

Most Innovative Building  
Management System (BMS)  
**Schneider Electric**

---

Most Innovative Project Planning Solution  
**DataForm Lab**

---

Most Innovative Project Information  
Management Solution  
**ProjectReady**

---

Most Innovative Quality Control Solution  
**Solibri**

---

Most Innovative Solution for  
Construction Automation  
**Bosch Rexroth**

---

Most Innovative Inventory Management Solution  
**The Access Group**

---

Most Innovative Materials Handling Solution  
**Hargreaves Industrial Services**

---

Most Innovative Solution for  
Supply Chain Management  
**Trimble (Viewpoint)**

---

Most Innovative Solution for  
Managing Supplier Relations

**ProcurePro**

---

Most Innovative Predictive Maintenance Solution

**ABB**

---

Most Innovative ERP Solution

**Deltek**

---

Most Innovative Master Data  
Management Platform

**SAP**

---

Most Innovative Document Management Solution

**Procore Technologies**

---

Most Innovative Billing Solution

**CoConstruct**

---

Most Innovative Energy Management Solution

**Siemens**

---

Most Innovative Solution for Waste Reduction

**Biffa**

---

Most Innovative Provider of  
Sustainable Building Materials

**Cemvision**

---

Most Innovative Water Management Solution

**SoilDri**

---





[www.ccemagazine.com/awards](http://www.ccemagazine.com/awards)

[awards@finelightmediagroup.com](mailto:awards@finelightmediagroup.com)